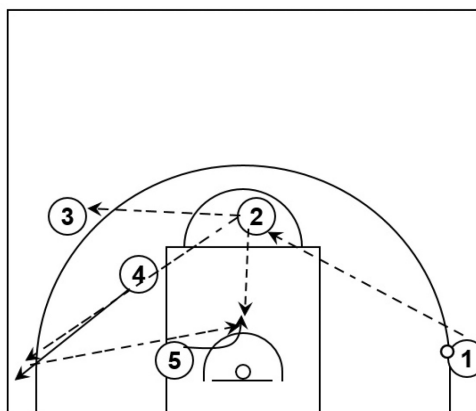
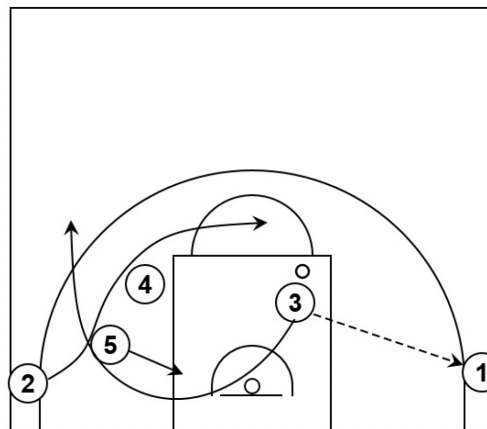
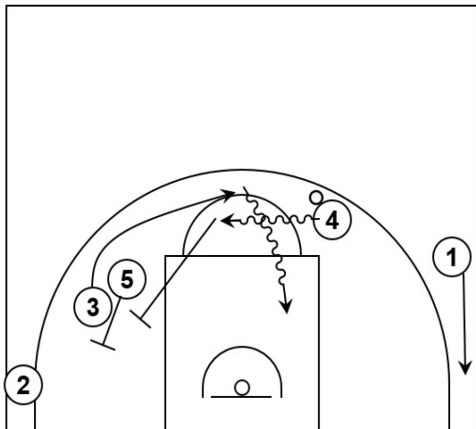
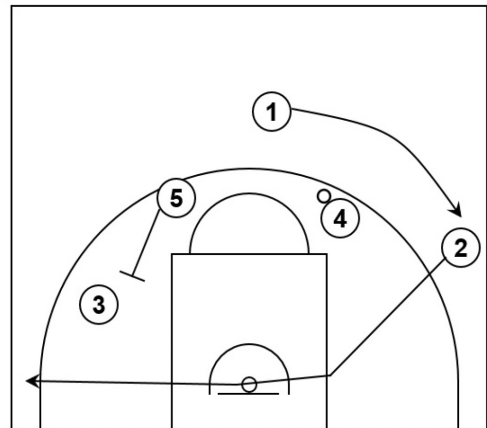
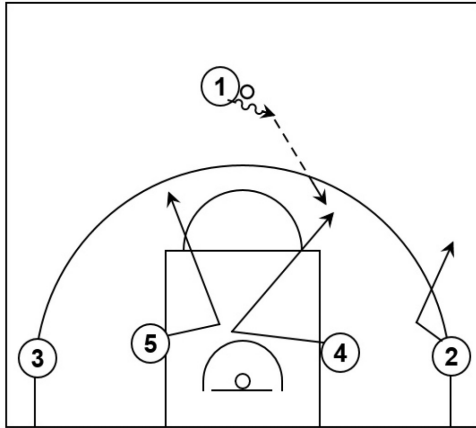


THE COACHES CORNER

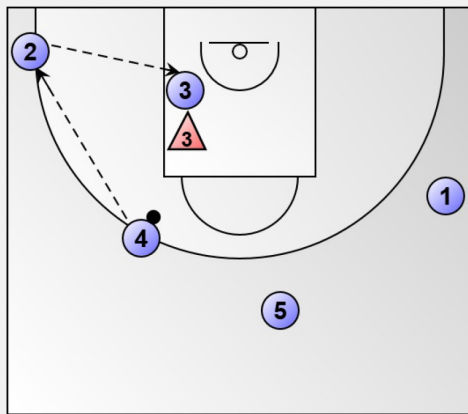
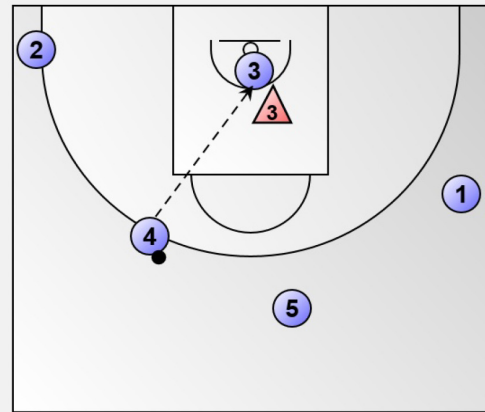
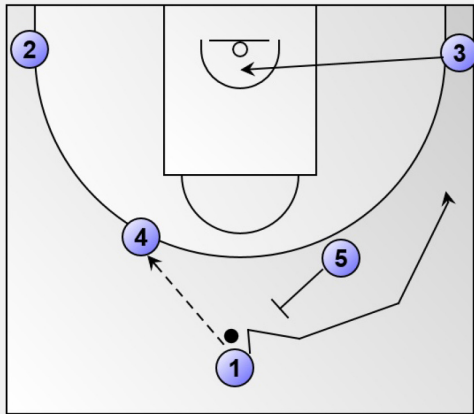
Two Horn Sets to improve your game...

Olson [offence]

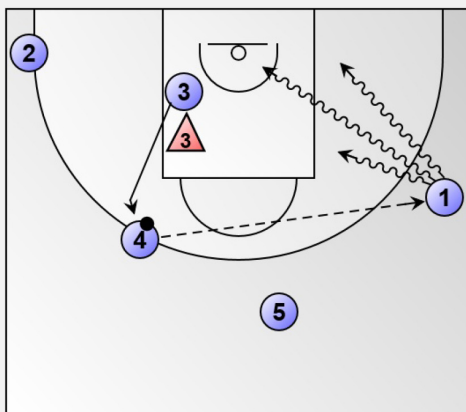
with respect to the late Lute Olson



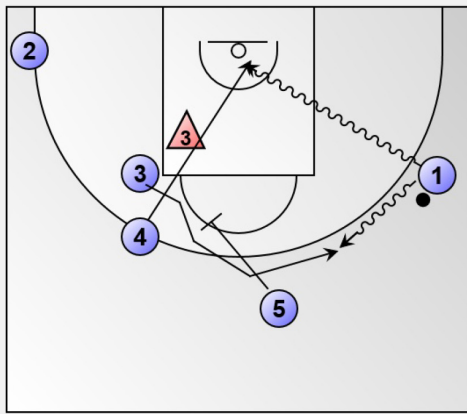
Gasol [offence]



First look - pass to sprint cut on rim.
Second look - read cutter's defender: if top side & sealed = pass to corner.



When skipped #1 = look for drive & make the play. Rim Cutter lifts.
If #1 cannot drive = passer rim run.
Bask



Bask screener/reversal passer to #1 = Read the up cut to set screen.

Ball screen to the empty side to either:
 1. screen away
 2. Pop and spread. Ready to dive on the corner pass.

