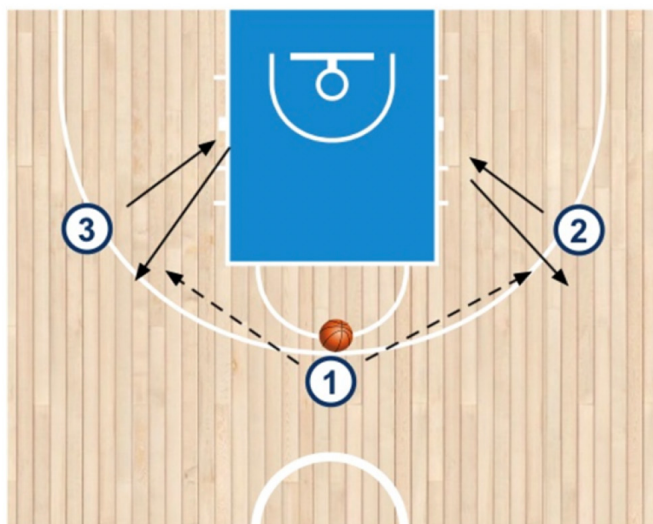


THE COACHES CORNER

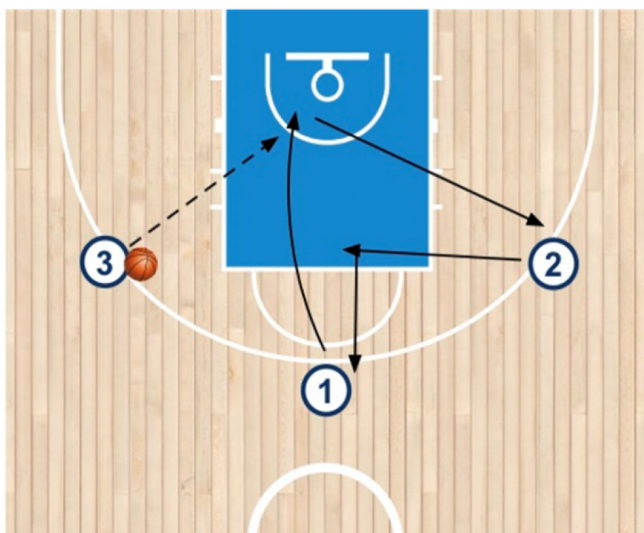
THREE PLAYERS FIRST PASS, CUT AND RELOCATE • 3 PLAYERS



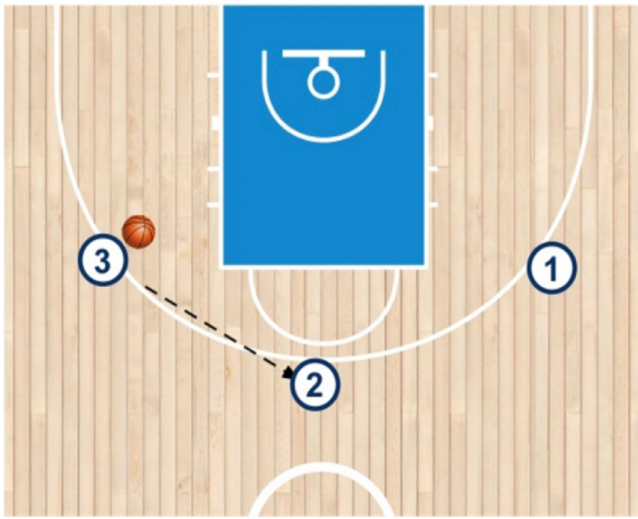
1 with the ball on the top. 2 and 3 fill the two wings.

2 and 3 V cut to get rid of the defense. 1 pass the ball to 2 or 3.

1 pass the ball to 3 and cuts hard to the basket. 2 will fill the empty spot of 1 with a L cut.



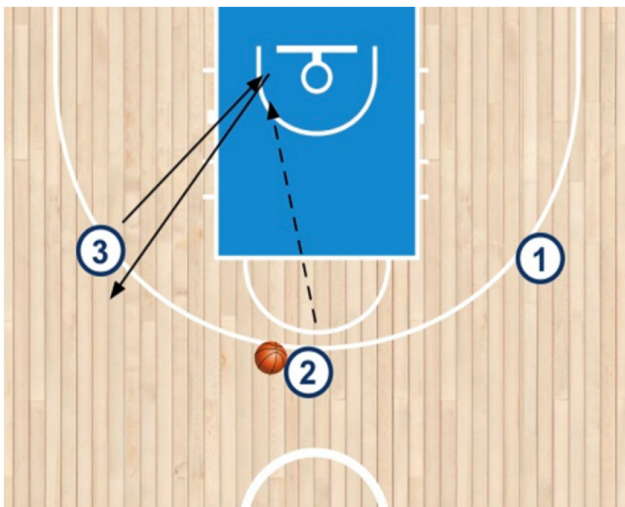
3 can pass the ball to 1 if open, driving to the basket or pass the ball to 2 on the top. 1 will relocate to the vacant spot left by 2.

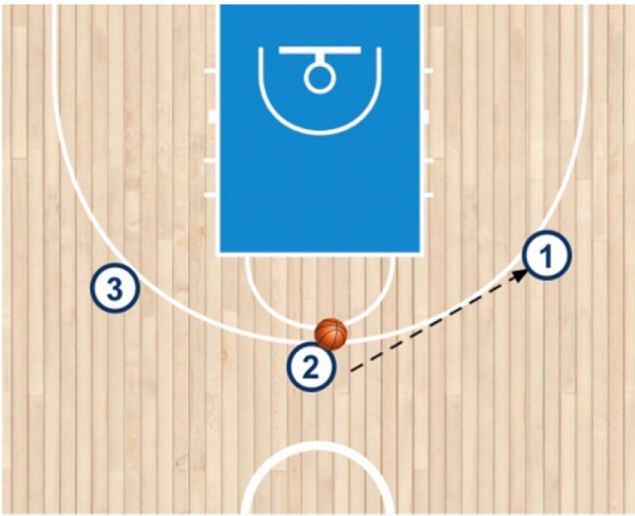


3 pass the ball to 2 on the top. 1 filled the other wing.

3 pass the ball to 2 and cuts hard to the basket. 2 pass the ball to 3 cutting if 3 is open.

3 doesn't receive the ball and gets back to the same wing.

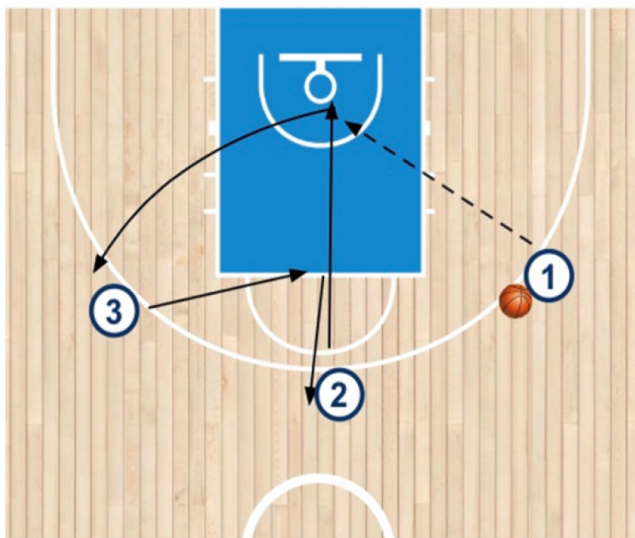


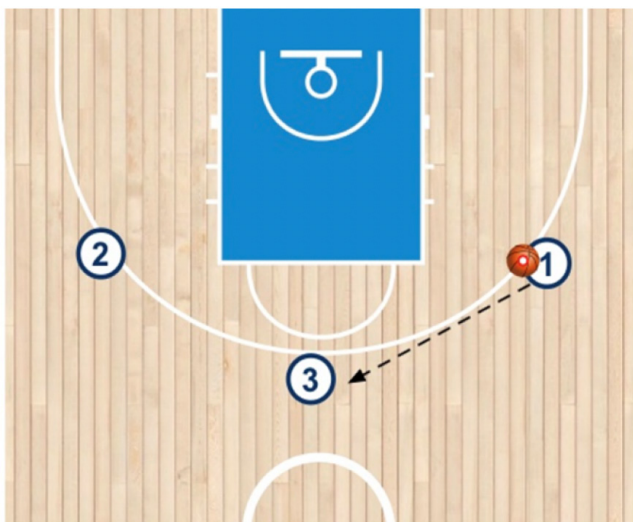


2 pass the ball to 1 on the opposite wing.

2 cuts hard to the basket and try to get a pass from 1 for a lay up.

3 fills the spot of 2 with L cut.

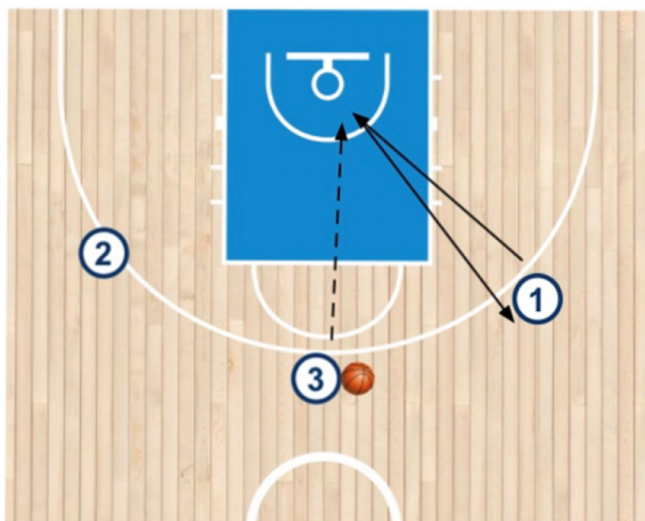




1 pass the ball to 3 on the top, while 2 relocates on the other wing.

After the pass 1 cuts hard to the basket trying to get the ball to score.

If 1 doesn't get the ball gets back on the same wing.



TEACHING POINTS

- All cuts have to get under the rim or inside the semi-arch. Coach can place a cone to visually help the players.

- After a cut when relocating to the empty spot, players' back to the baseline to have all the court in sight.

- The player relocating to the empty spot left by the cutters, starts to move when the cutters enters the paint (No verbal signal).

- The player with the ball must see the cutter (can make a pass fake to him, making sure he is looking at that scoring opportunity) then looking for driving opportunity or pass the ball to another player.

- Coach can instruct players to make first 5/6 passes before scoring.

- In this 3man game scenario, wing to top pass, the cutter on the wing gets back on the same spot.

- Pass fake or dribble at players back cut immediately.

- Coach at certain point will add 3 defenders. Players can score also driving to the basket when have opened driving lanes. Players can score also with catch a shoot from penetration.